

CERTIFIED LAND CORNER RECORDATION

DESCRIPTION OF CORNER EVIDENCE FOUND, AND ORIGINAL RECORD (if known)

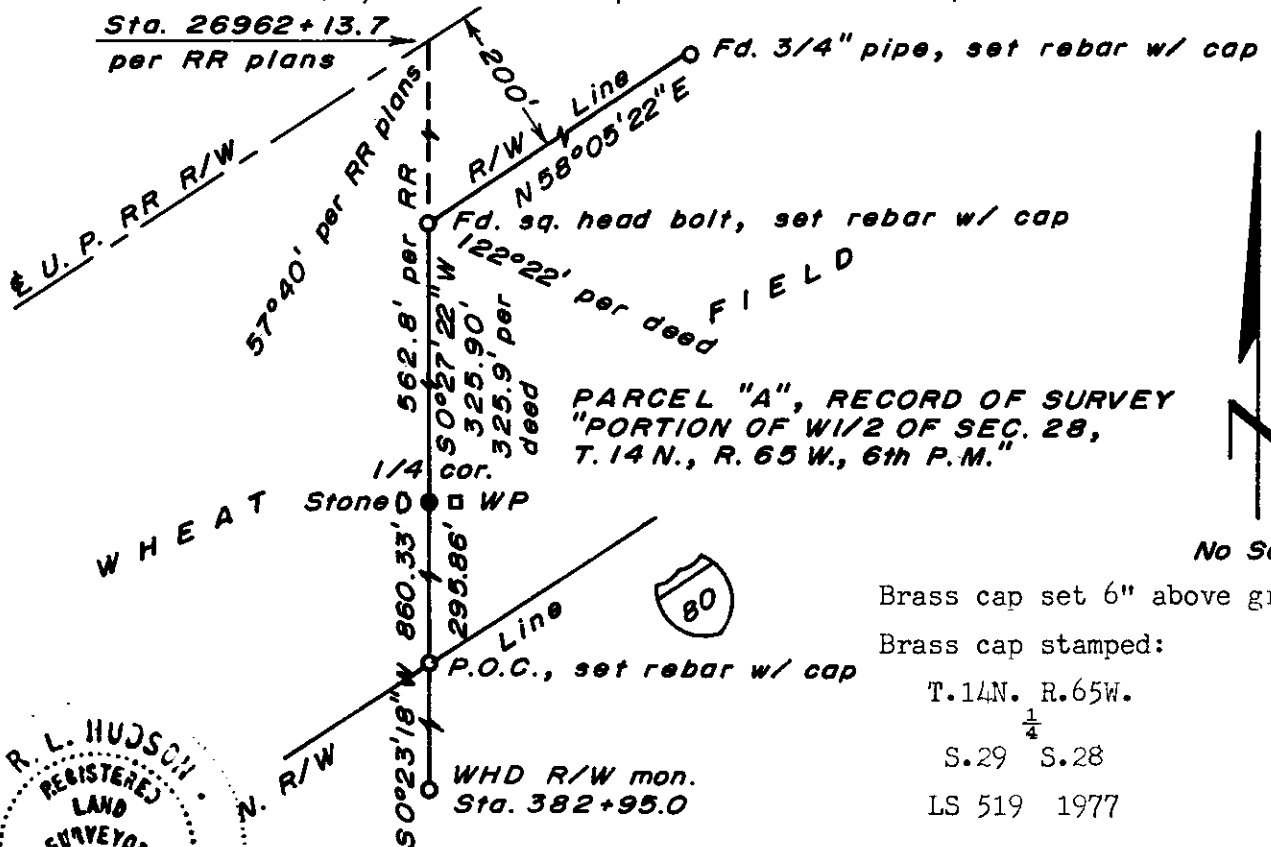
LOCATION
 $\frac{1}{4}$
 S.29 S.28
 T.14N., R.65W.
 6th P.M.

Corner falls in cultivated field, granite stone with $\frac{1}{4}$ " found lying on ground approximately 30 feet east of corner.
 Corner re-established from calls shown in Warranty Deed recorded in Book 1017 at page 408 at the office of the Laramie County Clerk.
 Position agrees with tie shown on plans of Union Pacific Railroad.

DESCRIPTION OF MONUMENT AND ACCESSORIES ESTABLISHED TO PERPETUATE THE ORIGINAL LOCATION OF THIS CORNER:

At the corner: Set $1\frac{1}{2}$ " dia. x 30" long (concrete-filled) iron pipe with brass cap.
 Accessories: Set 4" x 4" x 4' long Redwood post with aluminum sign, 2 feet east of corner monument.
 Left stone as memorial.

SKETCH, WITH COURSE AND DISTANCE TO ADJACENT CORNER IF DETERMINED IN THIS SURVEY.
 (May Sketch or Paste Reproduction on Reverse Side.)

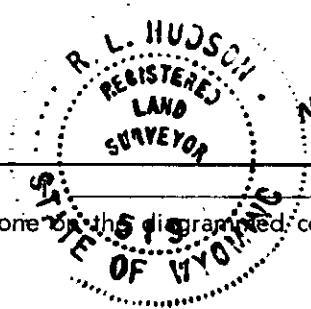


PARCEL "A", RECORD OF SURVEY
 "PORTION OF W1/2 OF SEC. 28,
 T. 14 N., R. 65 W., 6th P.M."

Brass cap set 6" above ground.

Brass cap stamped:

T. 14 N. R. 65 W.
 $\frac{1}{4}$
 S. 29 S. 28
 LS 519 1977



R. L. Hudson certify that I have carefully performed or reviewed the work done by the diagrammed corner as reported on this recordation form and approve the same.

R. L. Hudson
 Signature of Surveyor

Wyoming L.S. No. 519
 Registration No.

STATE OF WYOMING,
 Office of Clerk and Recorder,
 County of Laramie

This "corner record" was filed for record on the 9 day of Feb., 1977, was noted on the cross-index plat and is assigned page No. _____, in book No. _____.

Janet C. Whitehead
 County Official

Cross Index No.	<u>T-9</u>	T. <u>14</u>	R. <u>65</u>	Mer.
		T. _____	R. _____	Mer.
		T. _____	R. _____	Mer.
		T. _____	R. _____	Mer.
		T. _____	R. _____	Mer.
		T. _____	R. _____	Mer.
		T. _____	R. _____	Mer.



[Faint, illegible handwritten text]

426902
Photographed ✓
Indexed ✓
Filed ✓
Assessor ✓